



Exam : 642-382

Title : Cisco Express Foundation for Field Engineers □

Ver : 11-12-07

**QUESTION 1**

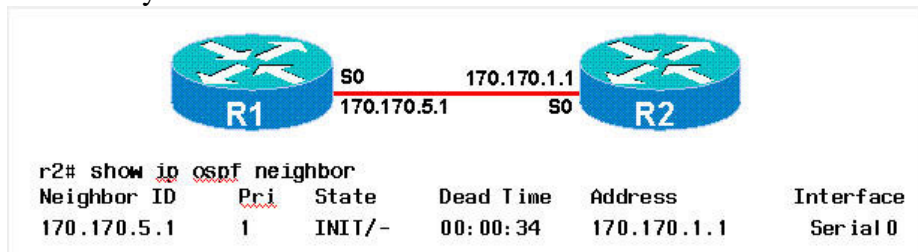
A wireless autonomous 1200 access point running core feature set in root mode has its SSID set to Factory\_floor and provides connection to a repeater access point with its SSID set to Factory\_floor, If the root-mode access point is using channel 11 , which channel will the repeater access point use?

- A. channel 11
- B. channel 1 or 6
- C. any nonoverlapping channel
- D. The root access point and the repeater will negotiate this setting.

Answer: A

**QUESTION 2**

R2 is always in the init state.



Which two statements are correct? (Choose two.)

- A. R2 is seeing hello packets from R1.
- B. R2 is not seeing hello packets from R1.
- C. The exchanging of data between R1 and R2 is occurring because each is sending hello packets.
- D. Two-way communication has not been established between R1 and R2 because R2 is not seeing its router ID in the hello packets that it is receiving from R1.
- E. R2 has an access list defined for 30 that is blocking an OSPF multicast IP address of 2240.05.

Answer: A, D

**QUESTION 3**

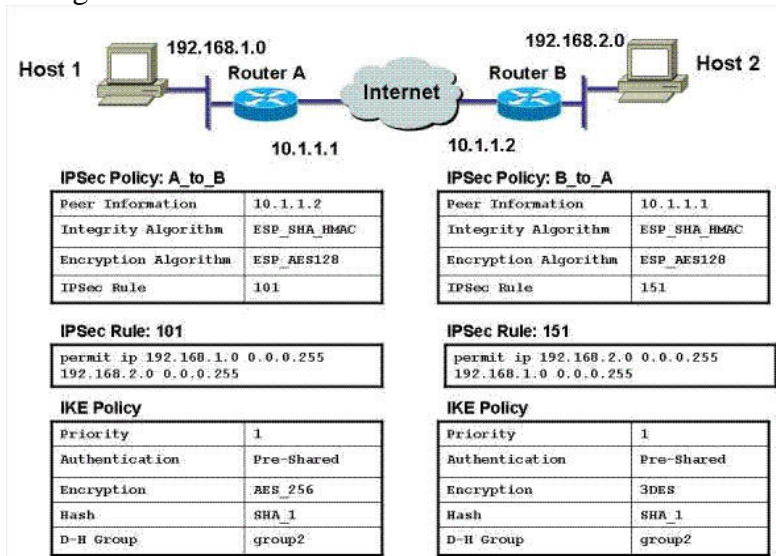
You are migrating the network design from using point security products (perimeter router, firewall, VPN router, IPS) to an integrated security solution using Cisco ISR. During the migration process, you determine that you need to improve VPN performance. What can you do?

- A. upgrade the Cisco IOS image on the ISR to the V3PN bundle
- B. increase the RAM on the ISR
- C. install AIM-VPN EPII-PLUS on the ISR
- D. enable transparent tunneling using IPsec over TCP

Answer: C

**QUESTION 4**

The tables contain information from the Cisco Router and Security Device Manager configurations of Router A and Router B.



Traffic between Host 1 and Host 2 is not successfully establishing the site-to-site VPN between Router A and Router B.

What is the mostly likely cause of this fault?

- A. RouterA is using a standard IP ACL (100-149) while Router B is using a Turbo ACL (150?99).
- B. The IKE encryption methods on the two routers are different.
- C. The IPSec policy map names on the two routers are different.
- D. The IPSec rules on the two routers are not permitting the correct interesting traffic.

Answer: B

**QUESTION 5**

A company has just set up an e-commerce webhost on the DMZ.

Rule	Original		Translated		
Type	Interface	Source Network	Destination	Interface	Address
dmz		172.16.1.2	any	pnet	172.16.10.18
dmz		172.16.1.2	any	outside	192.168.1.9
dmz		172.16.1.0/24	any	pnet	172.16.10.20-172.16.10.63
dmz		172.16.1.0/24	any	outside	192.168.1.20-192.168.1.63

#	Rule Enabled	Action	Source Host/Network	Destination Host/Network	Rule Applied To Traffic	Interface	Service
-	<input checked="" type="checkbox"/>	<input checked="" type="checkbox"/>	any	any		inside (outbound)	ip
-	<input checked="" type="checkbox"/>	<input checked="" type="checkbox"/>	any	any		dmz (outbound)	ip
1	<input checked="" type="checkbox"/>	<input checked="" type="checkbox"/>	any	172.16.1.2	incoming	pnet	http/tcp
1	<input checked="" type="checkbox"/>	<input checked="" type="checkbox"/>	any	172.16.1.2	incoming	outside	http/tcp

It was designed so that partners can enter their equipment orders via a secure interface on a security appliance. The first time a partner tried to access the e-commerce webhost at <http://172.16.1.2>, the partner could not gain access to the webhost.

After reviewing the network diagram, the Cisco Adaptive Security Device Manager translation table, and Cisco ASDM access list configuration shown in the exhibit, what did the corporate network administrator determine to be the cause of the problem?

- A. The pnet static translation entry is not configured correctly.
- B. The URL that the partner is using is not configured correctly.
- C. The pnet-access access list is not configured correctly.
- D. The pnet global address is not configured correctly.

Answer: B

### QUESTION 6

Which network management tool is designed to allow businesses to manage up to 40 devices?

- A. CiscoWorks Unrestricted
- B. CiscoWorks SNMS
- C. Campus Manager
- D. Resource Management Essentials

Answer: B

### QUESTION 7

Which command assigns a cost value of "17" to a switch port?

- A. spanning-tree interface fastethernet 5/8 17
- B. spanning-tree portcost 17

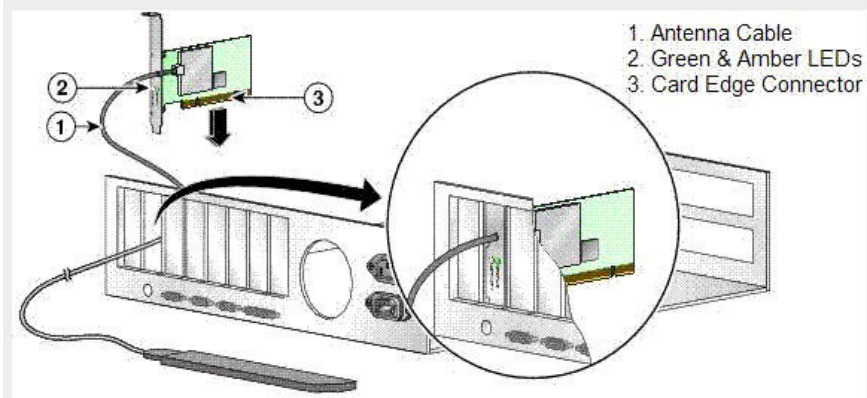
- C. spanning-tree port cost 17
- D. spanning-tree vlan 1 cost 17

Answer: D

---

**QUESTION 8**

The Cisco Aironet 802.11a/b/g Wireless LAN Client Adapter has two LEDs.



Which two LED states indicate that the card is associated to an access point and is working properly? (Choose two.)

- A. green LED off; amber LED solid
- B. green LED off; amber LED blinking sporadically
- C. green LED blinking quickly; amber LED blinking quickly
- D. green LED blinking slowly, amber LED blinking slowly
- E. green LED blinking slowly, amber LED blinking quickly

Answer: C, D

---

**QUESTION 9**

When troubleshooting poor network performance, which two symptoms would typically be associated with a network layer problem? (Choose two.)

- A. Packet loss is more than 30 percent.
- B. There is excessive broadcast traffic.
- C. There are excessive CRC errors.
- D. Pings succeed only part of the time.
- E. Slips are detected on WAN interfaces.
- F. ARP requests are timing out.

Answer: A, D

---

**QUESTION 10**

You are configuring a VLAN and the switch you are using requires that you do so within the VLAN database. Which command allows you to enter the VLAN database?

- A. Switch# vlan database

- B. Switch(config)#vlan database
- C. Switch(config-if)# vlan database
- D. Switch(vlan)# vlan database

Answer: A

---

**QUESTION 11**

Which critical issue should you account for when implementing an integrated network security management design?

- A. NAT interoperates with encrypted voice traffic
- B. host-based intrusion detection systems reside in the network
- C. all network devices are time-synchronized
- D. SNMP community read-write strings are configured to allow for total management access

Answer: C

---

**QUESTION 12**

A customer with a small enterprise network of 15 remote sites is trying to optimize its VPN by migrating some remote sites using Frame Relay connections to the Internet to using cable connections to the Internet. Minimizing costs is one of the customer's highest priorities. Only a moderate amount of IP traffic is passing through the network, most of which is from the remote sites to the central site. IPSec should be used to provide VPN functionality and basic confidentiality is desired.

Based on the traffic patterns, which topology would be the easiest for this customer to set up and manage?

- A. full mesh
- B. partial mesh
- C. point-to-multipoint
- D. hub-and-spoke

Answer: D

---

**QUESTION 13**

A host on the Sales subnet (10.0.2.0/24) is not able to initiate a web connection to an outside website.

Enable traffic through the firewall without address translation

Translation Rules       Translation Exemption Rules

Show Rules for Interface:

Rule	Original			Translated	
Type	Interface	Source Network	Destination	Interface	Address
Static NAT	dmz1	ftp_host 172.16.1.2	any	outside	192.168.1.11
Static NAT	inside	insidehost 10.0.1.11	any	outside	192.168.1.10
Static NAT	dmz2	www_server 172.16.10.2	any	outside	192.168.1.12
Static NAT	dmz2	www_server 172.16.10.2	any	dmz1	172.16.1.22
Dynamic NAT	inside	inside:any/0	any	outside	192.168.1.20-192.168.1.94
Dynamic NAT	dmz1	172.16.1.0/24	any	outside	192.168.1.20-192.168.1.94

Static NAT     
 Dynamic NAT     
 Static Policy NAT     
 Dynamic Policy NAT

According to the network diagram and partial Cisco Adaptive Security Device Manager configuration shown in the exhibit, what is the cause of the problem?

- A. The dynamic NAT global pool is not configured correctly.
- B. The source networks for static NAT are not configured correctly.
- C. The administrator has not added an access list to allow the connection.
- D. The source network for dynamic NAT is not configured correctly.

Answer: D

#### QUESTION 14

A user is unable to connect to the Cisco Router and Security Device Manager via HTTPS. Which two or these might have caused this problem? (Choose two)

- A. The ip https server command is missing from the running configuration.
- B. The ip http secure-server command is missing from the running configuration.
- C. The user is trying to launch Cisco Router and Security Device Manager from the inside (secured) interface with a firewall enabled.
- D. The user has a privilege level lower than 15.
- E. The browser security level is set too high.

Answer: B, D

#### QUESTION 15

Which command can be used to verify that RIPv2 is running on a router?

- A. show startup-config
- B. show ip route
- C. show ip route rip
- D. show ip protocols

Answer: D

---

**QUESTION 16**

According to the Cisco Adaptive Security Device Manager window, which statement about address translation is correct?

- A. Using Network Address Translation, any host on the DMZ1 subnet (172.16.1.0) will be translated to a mapped address on the outside interface of 192.168.1.11.
- B. Using port address translation, DMZ2 host 172.16.10.2 will be translated on DMZ1 to IP address 172.16.1.22 with a dynamically assigned port address.
- C. Using Network Address Translation, host 10.0.1.10 on the inside network will be dynamically translated to a mapped address from the address pool of 192.168.1.20 to 192.168.1.94.
- D. Using port address translation, outside host 192.168.1.10 with a dynamically assigned port address will be translated to 10.0.1.11 on the inside interface.

Answer: C

---

**QUESTION 17**

When using Cisco Router and Security Device Manager to configure AAA login authentication policies, which four methods are available? (Choose four.)

- A. group RADIUS: use a list of RADIUS hosts
- B. group TACACS+: use a list of TACACS+ hosts
- C. enable: use enable password
- D. otp: use one-time password
- E. local: use local database
- F. default use line password

Answer: A, B, C, E

---

**QUESTION 18**

A network administrator is troubleshooting an EIGRP connection between Router A and Router B.

```
RouterA# debug eigrp packets
...
01:39:13: EIGRP: Received HELLO on Serial0/0 nbr 10.1.2.2
01:39:13: AS 100, Flags 0x0, Seq 0/0 idbQ 0/0 iidbQ un/rely 0/0 peerQ un/rely 0/0
01:39:13:      K-value mismatch
```

Given the debug output on Router A, which two statements are true? (Choose two.)

- A. Router A received a hello packet with mismatched autonomous system numbers.
- B. Router A received a hello packet with mismatched hello timers.
- C. Router A received a hello packet with mismatched authentication parameters.
- D. Router A received a hello packet with mismatched metric-calculation mechanisms.



- E. Router A will form an adjacency with Router B.
- F. Router A will not form an adjacency with Router B.

Answer: D, F

---

**QUESTION 19**

Which two statements best describe the wireless core feature set using autonomous access points when implementing Wireless Domain Services? (Choose two)

- A. The primary Layer 2 WDS server address is configured via the infrastructure access point GUI.
- B. The primary Layer 2 WDS server address is automatically discovered by the infrastructure access points through multicast.
- C. The primary Layer 2 WDS is selected by the highest MAC address followed by priority number.
- D. The primary Layer 2 WDS is selected by the highest priority number, followed by MAC address.
- E. The primary Layer 2 WDS is selected by the highest IP address, followed by MAC address.

Answer: B, D

---

**QUESTION 20**

A concern has been expressed that the switched infrastructure in an integrated network is vulnerable to VLAN hopping attacks. Which two configuration statements can be used to mitigate VLAN hopping? (Choose two.)

- A. switchport port-security
- B. switchport port-security tagging
- C. switchport access vlan
- D. switchport double-tag snooping
- E. switchport mode access

Answer: C, E

---

**QUESTION 21**

You enter the command show ip ospf neighbor and see "two-way/DROTHER" listed as the state for neighbor 10.1.1.1.

What does this status indicate?

- A. The neighbor 10.1.1.1 is not a DR or BDR.
- B. The neighbor relationship with 10.1 .1.1 has not yet completed.
- C. DR and BDR election is in progress.
- D. The neighbor 10.1.1.1 is the BDR.

Answer: A

---

**QUESTION 22**

A customer with a large enterprise network wants to allow employees to work from home over the Internet. The customer anticipates a large amount of traffic, predominantly toward the central site. The customer also requires a VPN using strong user authentication and encryption to protect highly sensitive data.

Which solution best meets this customer's requirements?

- A. remote-access VPN with software encryption
- B. remote-access VPN with hardware encryption
- C. site-to-site VPN with hub-and-spoke tunnels using 3DES and pre-shared secrets
- D. site-to-site Cisco Easy VPN

Answer: B

---

**QUESTION 23**

Which two statements are correct about using Cisco Router and Security Device Manager (SDM) to configure the OSPF routing protocol? (Choose two.)

- A. Cisco SDM enforces the creation of area 0 when configuring OSPF.
- B. Cisco SDM will use the supplied wildcard mask to exclude the host bits from the configured network address.
- C. Cisco SDM allows the configuration of an area range to allow route summarization between OSPF areas.
- D. Cisco SDM allows the selection of OSPFv1 or OSPFv2.
- E. Cisco SDM allows the configuration of passive interfaces.

Answer: B, E

---

**QUESTION 24**

Which three statements are correct about the IEEE 802.3af Power over Ethernet standard? (Choose three.)

- A. It defines a port that acts as a power source to be a PSE.
- B. It defines a powered device to be a PDE.
- C. It defines how a powered device is detected.
- D. It defines three methods of delivering Power over Ethernet to the discovered powered device.
- E. It describes five power classes to which a device may belong.
- F. It defines power class 0 as being reserved for future use.

Answer: A, C, E

---

**QUESTION 25**

Users logging into Cisco Router and Security Device Manager should be authenticated using the Cisco ISP local user database. Currently, none of the users can access Cisco Router and Security Device Manager via HTTP. You should check the configuration of which command or commands when attempting to resolve this problem?

- A. ip http secure-server
  - B. ip http authentication local
  - C. line vty 0 5 login local
  - D. aaa new-model
- aaa authentication login default local

Answer: B

---

**QUESTION 26**

A customer in Europe needs to establish an 11-Mbps wireless bridge link between two office buildings that are approximately 1.3 km apart. The wireless link will pass through a public park, which contains a lake that is surrounded by trees. You run the range calculation and determine that the Cisco Aironet 1300 Series Outdoor Access Point/Bridge should work. You install the link using 10.5-dB yagis with 75 feet of standard Cisco cabling and both radios set at 20 mW. The wireless bridges are not able to establish or maintain a link. What is needed to successfully complete this link?

- A. An amplifier needs to be installed at one of the sites.
- B. The antenna must be raised high enough to clear the trees.
- C. Lower loss cabling needs to be used to bring the EIRP into legal limits.
- D. Due to the trees, a 21-dBi dish needs to be used for its narrower beam width.

Answer: B

---

**QUESTION 27**

The customer wants to implement wireless security through implementation of WPAv2. Which component of WPAv2 would limit the rollout because of the continued use of old access points?

- A. 46-bit IV
- B. AES
- C. TKIP
- D. MIC

Answer: B

---

**QUESTION 28**

Which statement is true about a Cisco Aironet 350 Series wireless client when its green LED appears to be off and its amber LED is blinking?

- A. The client adapter is scanning for a network.
- B. The client adapter is in ad hoc mode.
- C. The client adapter is performing a self-test.
- D. The client adapter is in power-save mode.

Answer: D

**QUESTION 29**

You are troubleshooting OSPF neighbor establishment problems, which are occurring over Frame Relay interfaces that use the default OSPF network type. What should you verify in the router configuration?

- A. the ip ospf network point-to-point statement under the Frame Relay interface
- B. the ip ospf priority 0 statement on the Frame Relay interface on the designated router
- C. the neighbor statements on the Frame Relay interface
- D. the frame-relay map statement on the Frame Relay interface

Answer: D

---

**QUESTION 30**

Which two statements describe traffic that would be permitted based on the current access list configuration?

- A. Telnet traffic from any outside host to the 172.16.10.2 host on the dmz2
- B. HTTP and HTTPS traffic from any outside host to the 172.16.10.1.2 host on the dmz1
- C. Any IP traffic from any outside host to the 172.16.10.2 host on the dmz2
- D. Any IP traffic from any outside host to the 172.16.1.2 host on the dmz2

Answer: A, B

---

**QUESTION 31**

Which statement is correct about the current address translation configurations on the security appliance?

- A. Dynamic NAT is used to translate the 10.0.1.100 host on the inside interface to a global address of 192.168.1.1
- B. Port Address Translation (PAT) is used to translate any host on the inside interface to the 192.168.1.100 global address.
- C. Static NAT is used to translate the 172.16.1.2 host on the dmz1 interface to a global address of 192.168.1.102
- D. Dynamic NAT is used to translate any host on dmz1 and dmz2 interfaces to a mapped address from the address pool of 192.168.1.110 to 192.168.1.250
- E. Static NAT is used to translate the 172.16.10.2 host on the dmz2 interface to a global address of 192.168.1.100

Answer: C

---

**QUESTION 32**

Which is the current configured default gateway IP address on the security appliance?

- A. 172.16.10.1
- B. 172.16.1.1

- C. 192.168.1.2
- D. 10.0.1.1
- E. 172.169.1.2
- F. 172.16.10.2

Answer: C

---

**QUESTION 33**

Which hosts are allowed to manage this security appliance using the ASDM?

- A. The 10.0.100 host only
- B. The 172.16.1.2 host only
- C. The 172.16.10.2 host only
- D. Any host on the 10.0.1.0/24 subnet
- E. Any host on the 172.16.1.0/24 subnet
- F. Any host on the 172.16.10.0/24

Answer: A

---

**QUESTION 34**

What is the maximum number of VLANs and physical interfaces are supported based on the current security appliance software license?

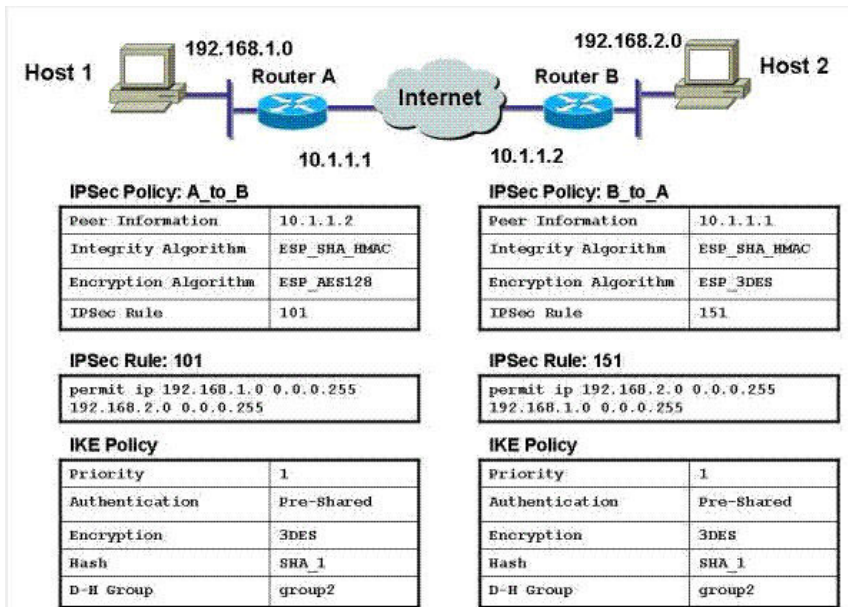
- A. 25 VLANs and 6 interfaces
- B. 10 VLANs and 3 interfaces
- C. 50 VLANs and 8 interfaces
- D. 150 VLANs and 14 interfaces
- E. 100 VLANs and 10 interfaces

Answer: A

---

**QUESTION 35**

The tables contain information from the Cisco Router and Security Device Manager configurations of Router A and Router B.



Traffic between Host 1 and Host 2 is not successfully establishing the site-to-site VPN between Router A and Router B.

What is the mostly likely cause of this fault?

- A. Router A is using a standard IP ACL (100-149) while Router B is using a Turbo ACL (150?99).
- B. The IPsec encryption methods used by each router do not match.
- C. The D-H Group settings on the two routers are the same.
- D. The IPsec rules on the two routers are not permitting the correct interesting traffic.

Answer: B

### QUESTION 36

According to the error log, VLAN 1 is where the BPDU was received, and VLAN 2 is where the BPDU originated.

```
%SPANTREE-2-RECV_1Q_NON_TRUNK: Received IEEE 802.1Q BPDU on non
trunkFastEthernet0/1 on vlan 1.
%SPANTREE-2-BLOCK_PORT_TYPE: Blocking FastEthernet0/1 on vlan
1.Inconsistent port type.
%SPANTREE-2-RX_1QPVIDERR: Rcvd pvid_inc BPDU on 1Q port 3/25 vlan 1
%SPANTREE-2-RX_BLKPORTPVID: Block 3/25 on rcving vlan 1 for inc peer vlan
10
%SPANTREE-2-TX_BLKPORTPVID: Block 3/25 on xmtting vlan 10 for inc peer
vlan
```

When inconsistency is detected, what happens?

- A. VLAN 1 is blocked, while VLAN 2 is forwarding
- B. VLAN 1 is blocked, while VLAN 2 is listening
- C. Both VLANs are listening on the port from which this BPDU is send
- D. Both VLANs are blocked on the port from which this BPDU is received

Answer: D

**QUESTION 37**

A company needs to provide site-to-site VPN, remote access VPN, and firewall protection. Which device best supports all three functions?

- A. Cisco PIX
- B. Cisco ASA
- C. Cisco Concentrator
- D. Cisco Router and Security Device Manager

Answer: B

---

**QUESTION 38**

The network administrator has configured the SSID value in a wireless Cisco Aironet client card. What is the result of the client-to-access-point association if the client SSID1 is left blank, and the SSID2 is assigned a value of my\_ssid?

- A. The client will consider SSID1 a null value, causing the client to request the SSID from the access point.
- B. The client software will not allow this configuration and will create an error message until the configuration is corrected.
- C. The client software will replace SSID1 with SSID2, and use my\_ssid to attempt association with the access point.
- D. The client software will attempt association with the access point using a null value of SSID1, and if not successful it will rotate to use the SSID2 value of my\_ssid.

Answer: C

---

**QUESTION 39**

You have applied a firewall configuration to your router using the Cisco Router and Security Device Manager (SDM) Firewall wizard. You find that you are now locked out and access via Cisco SDM is denied. After accessing the router via the console port, what must you do to regain access via Cisco SDM?

- A. Generate an RSA key pair between the host and device to allow secure access.
- B. Specify the Cisco SDM management port number to gain access.
- C. Create a loopback interface and connect to that IP address for management purposes when the configuration has been applied to the router.
- D. Modify the access list that denies Cisco SDM access.

Answer: D

---

**QUESTION 40**

Which two statements best describe the wireless core feature set using autonomous access points when implementing Wireless Domain Services? (Choose two.)

- A. Layer 2 and Layer 3 services can be configured in a Cisco Aironet autonomous AP or a Cisco

Integrated Services Router.

B. Layer 2 services can be configured in a Cisco Aironet autonomous AP or a Cisco Integrated Services Router.

C. Layer 2 and Layer 3 services can be configured in a Cisco Aironet autonomous AP or controllers.

D. Layer 3 services can be configured in WLSM.

E. Layer 3 services can be configured in WLSE.

Answer: B, D

---

**QUESTION 41**

DSPF routes are being redistributed into EIGRP but they are not showing up in the routing table. What are two possible causes? (Choose two.)

A. CEF has not been enabled.

B. Synchronization has been turned off.

C. Incorrect distribute lists have been configured.

D. No default metric has been configured for EIGRP.

E. The ip classless command is missing.

F. There are mismatched autonomous system numbers.

Answer: C, D

---

**QUESTION 42**

A North American customer is using 2.4-GHz radios in a point-to-point configuration. The radio power level is 17 dBm and is transmitting at 11 Mbps. The customer is using 21.5-dBi dish antennas and 50 feet of cabling, with a loss of 8.4 dB per 100 feet. The customer increased the distance between the transmitter stations and began experiencing link problems.

Without using a professional installer, which step should the customer take to fix the situation?

A. Use a cable with lower loss.

B. Upgrade to an 802.11a radio.

C. Install a higher gain antenna.

D. Increase the transmitter power.

Answer: A

---

**QUESTION 43**

In an infrastructure based on a wireless advanced feature set using lightweight access points, by which method is a rogue contained?

A. The WCS sends excessive traffic to the rogue, thus overloading the access point.

B. The rogue MAC address is used to spoof broadcast deassociation packets.

C. The rogue MAC address is used to spoof broadcast deauthentication packets.

D. The WCS sends out excessive signals on the same channel when the rogue is detected.



Answer: C

### QUESTION 44

According to the Cisco VPN Client software outputs shown



Which two statements are correct about the connection entry named isr? (Choose two.)

- A. HMAC-SHA1 is used to authenticate the remote users.
- B. Preshared key is used to authenticate the remote peer.
- C. AES is used to provide data confidentiality.
- D. The Cisco VPN Client software is assigned an internal IP address of 192.168.1.1.
- E. The PC that is running the Cisco VPN Client software will not have access to the local LAN once the PC is connected into the VPN.

Answer: B, E

### QUESTION 45

You have configured and applied a Cisco IOS Firewall access rule to the inbound, untrusted interface. You suspect that the rule may be blocking necessary traffic onto the network. What must you do to delete that rule when using Cisco Router and Security Device Manager?

- A. Select ACL Editor> Access Rules to delete the rule.
- B. You must remove the association between the rule and the interface before deleting the rule.
- C. You must delete the associated access list on the interface, then reconfigure the access list as required, and then reapply the access group to the proper interface.
- D. Go to the Edit Firewall Policy tab to delete the rule.

Answer: B

---

**QUESTION 46**

This display has been truncated to remove information that is not relevant to the question.

```
router#show interfaces ethernet 0/0
Ethernet0/0 is up, line protocol is up
...
21 input errors, 0 CRC, 0 frame, 0 overrun, 21 ignored
```

What would be a reason that there have been 21 ignored packets?

- A. Ethernet0 has no CDP neighbors.
- B. There are no tree input buffers to accept new packets.
- C. There are no tree output buffers for packets, which are traversing the router, to go into for transmission.
- D. Ethernet0 and the neighbor that it is connected to are not running the same routing protocol.
- E. This is not a valid error display. The display has been modified to show that there have been ignored packets.

Answer: B

---

**QUESTION 47**

After configuring VTP, you no longer receive updates as expected. Which command can you use to verify the number of VTP advertisements being transmitted?

- A. show vtp database
- B. show vtp counters
- C. show vtp statistics
- D. show vtp status

Answer: C

---

**QUESTION 48**

You have just configured HSRP and need to determine which router is active. Which command should you enter?

- A. show ip hsrp active
- B. show standby active
- C. show standby
- D. show active

Answer: C

**QUESTION 49**

An 802.11 b telephone is receiving an audio signal from an access point, but cannot send audio. What is a possible cause?

- A. The RSSI value on the telephone is greater than 35.
- B. The access point is set to receive only at 802.11g data rates.
- C. The security settings in the telephone do not match the settings in the access point.
- D. The transmit power in the telephone is significantly lower than the transmit power in the access point.

Answer: D

**QUESTION 50**

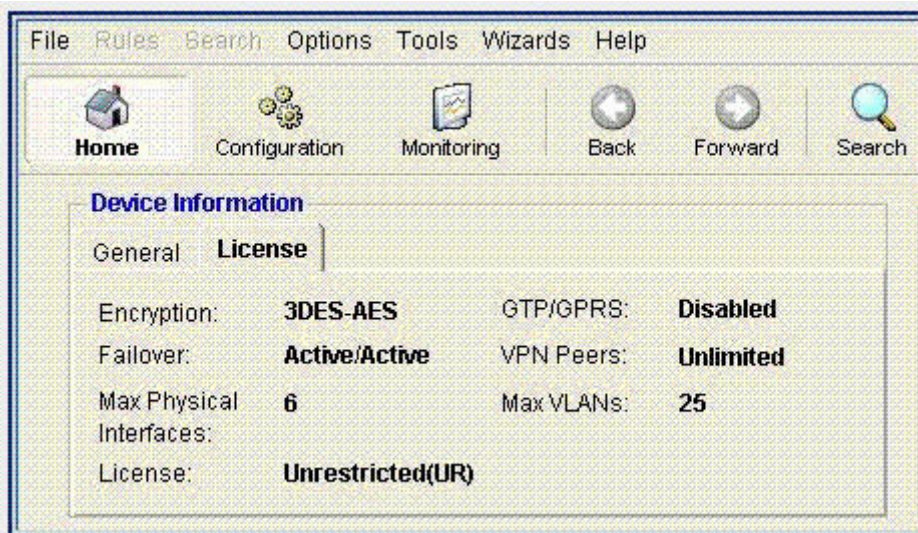
Which two features are only supported when using the Cisco Router and Security Device Manager (SDM) Advanced Firewall wizard and not supported when using the Cisco SDM Basic Firewall wizard? (Choose two.)

- A. deep-packet inspections
- B. IP unicast Reverse Path Forwarding on the outside (untrusted) interface
- C. DMZ services
- D. custom inspection rules
- E. proxy authentication

Answer: C, D

**QUESTION 51**

Which statement is correct about the information in the Cisco Adaptive Security Device Manager General and License Information screen?



- A. The security appliance supports active/active failover only.
- B. The security appliance supports 3DES-AES only.
- C. The managed device is a Cisco ASA 5540 Security Appliance with VPN premium license

enabled.

D. The managed device is a Cisco PIX 515E Security Appliance.

Answer: D

### QUESTION 52

A client is experiencing lower throughput and more packet retransmits in one area of the wireless network. At these times, the client utility shows high signal strength but low signal quality. What may be causing this issue?

A. The client does not support Cisco Compatible Extensions version 2.

B. Diversity is not enabled in the access point.

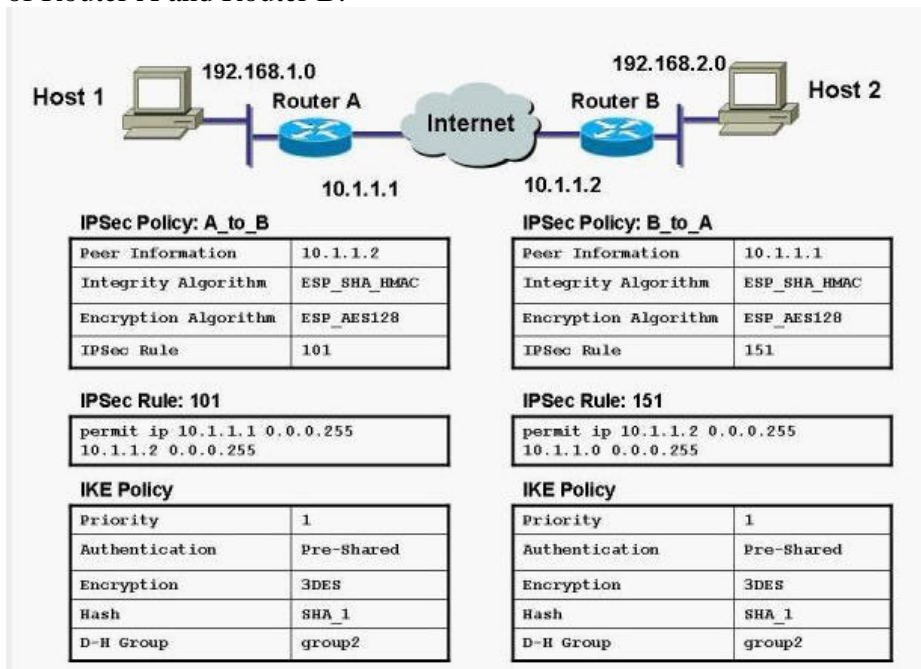
C. The WDS is failing to register the client card in the WLSM.

D. The channel is set incorrectly in the access point or in the client configuration.

Answer: B

### QUESTION 53

The tables contain information from the Cisco Router and Security Device Manager configuration of Router A and Router B.



Traffic between Host 1 and Host 2 is not successfully establishing the site-to-site VPN between Router A and Router B. What is the mostly likely cause of this fault?

A. The IPsec and IKE encryption methods do not match. They all have to be either 3DES or AES.

B. Router A is using a standard IP ACL(100-149)while Router B is using a turbo ACL(150-199).

C. The D-H Group settings on the two routers are set to group 2. They must be set to group 1 for SHA-1.

- D. The IPSec policy map names on the two routers do not match. They must be the same on both routers.
- E. The IPSec rules on the two routers are not permitting the correct interesting traffic.

Answer: E

#### QUESTION 54

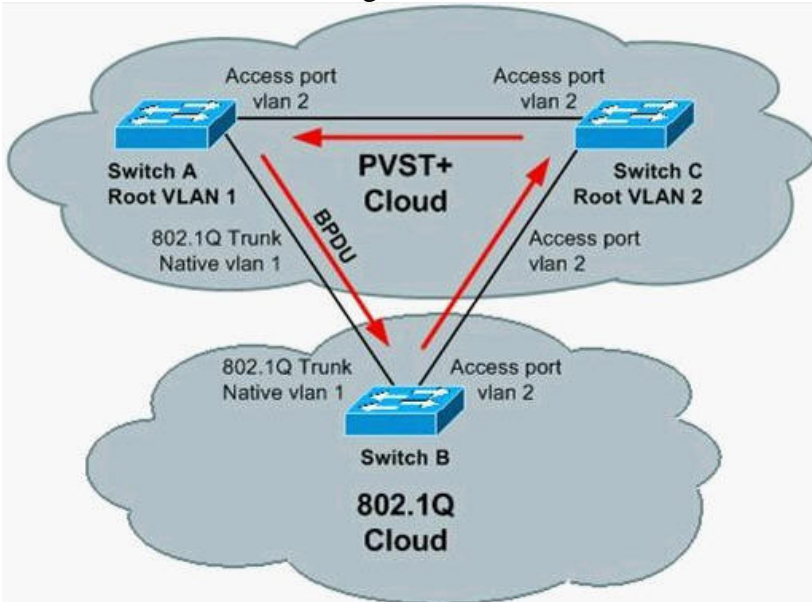
You connect via Telnet to a Cisco access point and enter the command show dot 11 link test. Which output might you obtain?

- A. signal-to-noise ratio
- B. incoming and outgoing signal strength
- C. TX packets dropped
- D. RX packets per second

Answer: B

#### QUESTION 55

Switches A and Care running PVST+ STP, and Switch B is running 802.1Q STP.



If the BPDU of the root in VLAN 1 is better than the BPDU or the root in VLAN 2, then there is no blocking port in the VLAN 2 topology. The BPDU of VLAN 2 never makes a "full circle" around the topology; it is replaced by the VLAN 1 BPDU on the B-C link, because B runs only one STP merged with VLAN 1 STP of PVST+. Thus, there is a forwarding loop.

What does PVST+ do to correct this?

- A. Switch A sends PVST+ BPDUs of VLAN 2 (to the SSTP address that is flooded by Switch B) towards Switch C. Switch C will put port C-B into a type-inconsistent state, which prevents the loop.
- B. Switch B sends PVST+ BPDUs of VLAN 1 (to the SSTP address that is flooded by Switch A) towards Switch C. Switch C will put port C-B into a type-inconsistent state, which prevents

the loop.

C. Switch C sends PVST+ BPDUs of VLAN 2 (to the SSTP address that is flooded by Switch B) towards Switch C. Switch A will put port C-B into a type-inconsistent state, which prevents the loop.

D. Switch A sends PVST+ BPDUs of VLAN 1 (to the SSTP address that is flooded by Switch B) towards Switch B. Switch A will put port C-B into a type-inconsistent state, which prevents the loop.

Answer: A

---

**QUESTION 56**

You have just configured and enabled the Cisco IOS Firewall feature set from a remote location using the Cisco Router and Security Device Manager (SDM).

Firewall wizard. You later want to double-check your configuration using Cisco SDM. However, you find that you can no longer connect to the Cisco Los Firewall using Cisco SDM.

What is the probable cause of this failure?

A. You must additionally specify the Cisco SDM management port number to gain access when the configuration has been applied.

B. You have not generated an RSA key pair between the host and device to allow secure access via Cisco SDM.

C. You have been locked out via access lists that have been applied to the router as a result of your Cisco SDM configuration.

D. You must specify the host IP address of Cisco SDM in the Configuration panel for allowed management connections.

Answer: C

---

**QUESTION 57**

Which two statements best describe the wireless implementation of Cisco Aironet root and nonroot bridging? (Choose two.)

A. Point-to-point access points can be used if one is root and the other is non-root.

B. WGB can be used with an access point if the distance is less than one mile.

C. Root mode must be enabled only on one side in a point-to-point link to interoperate with other vendors and comply with 802.11.

D. Up to 17 non-root bridges can associate to a root bridge.

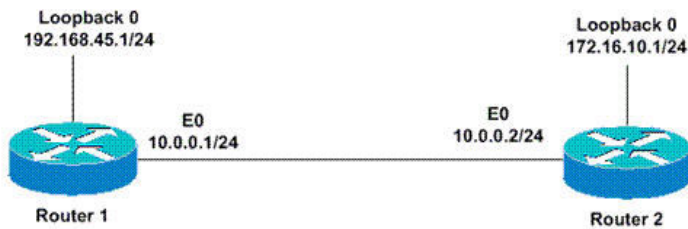
E. Point-to-point WGB can be used if total number of PCs is fewer than eight.

Answer: B, D

---

**QUESTION 58**

Which two statements are correct about what is displayed? (Choose two.)



Router2# `show ip ospf neighbor`

Neighbor ID	Pri	State	Dead Time	Address	Interface
192.168.45.1	1	FULL/DR	00:00:36	10.0.0.1	Ethernet0

- A. The IP address that is used for the router ID must be reachable.
- B. Router 1 is the designated router because it has the lowest configured IP address.
- C. Router 1 is the designated router because it has the highest configured loopback address.
- D. If Router 1 had a PRI of 0, it could not be a designated router or a backup designated router.
- E. Router 1 has had its ID manually configured by using the router-ID command.

Answer: C, D

---

**QUESTION 59**

Which two statements best describe the wireless core feature set using autonomous access points when implementing repeater topology? (Choose two.)

- A. RF overlap between access points should be 10 to 15 percent with unique channels configured.
- B. RF overlap between primary and repeater access points should be 10 to 15 percent with the same channel configured.
- C. CK overlap between primary and repeater access points should be 50 percent with the same channel configured.
- D. RF overlap between primary and repeater access points should be 50 percent with unique channels configured.
- E. Clients that are associated with the repeater access point will have 10 to 15 percent less data throughput than clients that are associated with the primary root access point.
- F. Clients that are associated with the repeater access point will have 50 percent less data throughput than clients that are associated with the primary root access point.

Answer: C, F

---

**QUESTION 60**

In what location is it recommended that the Cisco Catalyst 6500 Series WLSM be placed?

- A. distribution layer
- B. core layer
- C. access layer
- D. network management functional module

Answer: A

---

**QUESTION 61**

Which three are different types of STP inconsistencies in a Layer 2 network? (Choose three.)

- A. MAC inconsistency
- B. root inconsistency
- C. EtherChannel inconsistency
- D. type inconsistency
- E. PVID inconsistency
- F. vendor inconsistency

Answer: B, C, D

---

**QUESTION 62**

Which two statements are correct about OSPF in a multiarea environment? (Choose two.)

- A. OSPF will by default summarize routing updates between areas.
- B. OSPF requires the use of the area range configuration command only when non default summarization is required.
- C. OSPF ABR routers are needed only at the boundary of another OSPF area.
- D. OSPF uses wildcard masks in the network statements but subnet masks in the area range statements.
- E. OSPF requires that all areas have a least one ASBR.

Answer: C, D

---

**QUESTION 63**

How many active VPN clients are currently connected to the 1841 ISR router?

- A. 0
- B. 1
- C. 2
- D. 3
- E. 4
- F. 5

Answer: B

---

**QUESTION 64**

Which IP address or address range will be used when allocating an internal IP address to the VPN clients for the "test"?

- A. 10.1.1.100 to 10.1.1.200
- B. 10.1.1.2 to 10.1.1.254



- C. 192.168.1.1 to 192.168.1.100
- D. 192.168.1.2 to 192.168.1.254
- E. 192.168.1.1
- F. 192.168.1.2

Answer: A

---

**QUESTION 65**

Which authentication method is used by the "test" VPN group?

- A. RSA Encrypted Nounce
- B. RSA Digital Signature
- C. Pre-Shared Key
- D. Digital Certificate
- E. DH2

Answer: C

---

**QUESTION 66**

Which method list and method is used to authenticate the remote access VPN users?

- A. sdm\_vpn\_xauth\_ml\_1
- B. sdm\_vpn\_group\_ml\_1
- C. SDM\_CMAP\_1
- D. local database on the ISR
- E. remote TACACS + server
- F. remote Radius Server

Answer: A, D